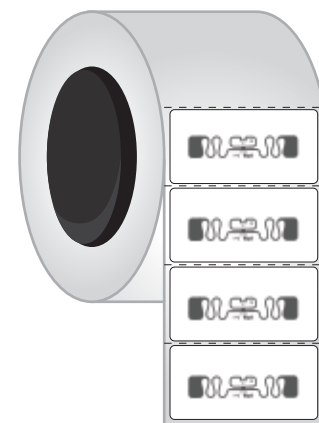
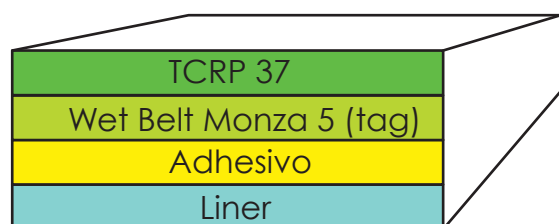
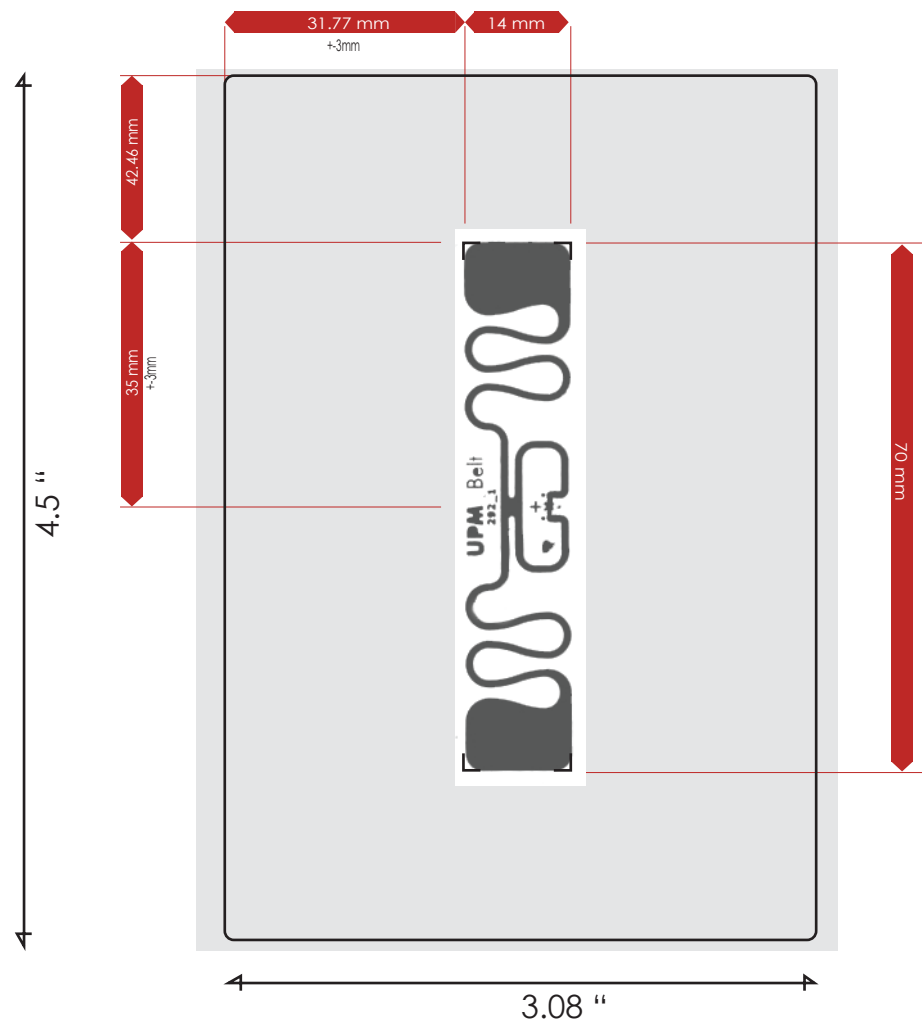


ETIQUETA ADHESIVA "FLAG TAG" 4.5" x 3.08"



SALIDA DE MATERIAL

DESCRIPCION:

Etiqueta Adhesiva 4.5" x 3.08"
 TCRP 37 2.2 MM (BLANCO DE ALTA DENSIDAD)
 Liner white kraft 2.5 mil.
 Tag: Smartrac Belt M5 EPC Gen2
 Bobina Centro 3"

CARACTERISTICAS ELECTRICAS:

Circuito Integrado (IC)	Impinj Monza 5
Protocolo de Interface	EPC Class 1 Gen 2, ISO 18 000-6C
Frecuencia de Operación	860 - 960 MHz
Memoria	128 bit EPC